

**SP4T Non-Reflective Miniature Switch  
TTL Compatible Driver, 0.5 ~ 18.0 GHz**

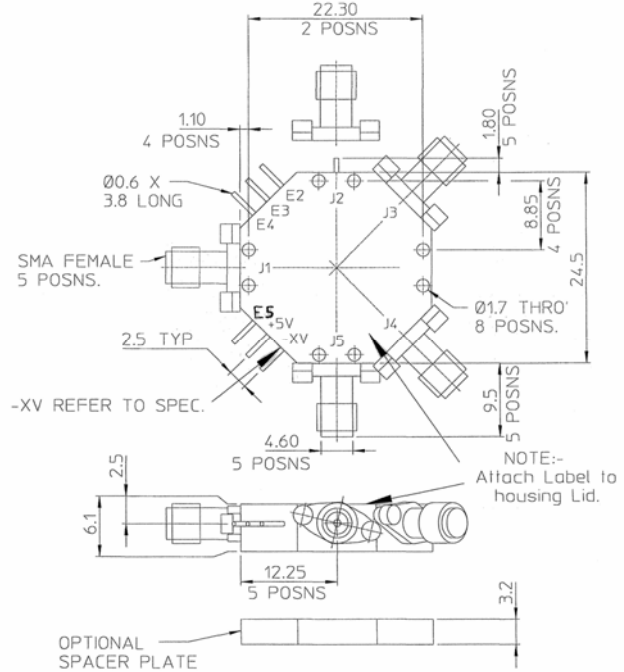
**MASWML0024  
V2**

**Features**

- Broad-Band Frequency Coverage
- Miniature Outline
- Field Removable Connectors
- Hermetically Sealed Housing
- High Isolation
- TTL Compatible
- Fast Switching

**Description**

The MASWML0024 is a broadband (0.5 – 18GHz) SP4T Non-reflective switch. It features Low Insertion loss and High Isolation. Each output arm is controlled independently, maximising design-in flexibility. This is provided by the built-in, high-speed, TTL compatible driver. The field replaceable connectors allow direct integration into microstrip applications. This proven harsh environment design is suitable for Airborne, Naval & Ground base applications.



Dimensions in 'mm'

**Mechanical**

5 SMA female RF connections: Field Replaceable

DC connections and TTL controls are supplied through solder pins.

This device is hermetically sealed, with a silver-plate finish to Def. Stan. 03-09.

**Specification at +25 °C**

(Applies over the frequency range @ +25 °C, output and input load impedance of 50 ohms. Unless otherwise stated limits & conditions are indicated values.)

Type	Frequency (GHz)	I/Loss Max. (dB)	Isolation Min. (dB)	R/Loss Min. (dB)	S. Speed Max. (ns)	I/P Power Max. (mW)	Logic	Power Supply		Operating Temp. °C	Storage Temp °C
								V	mA		
SP4T	0.5 ~ 17.0	3.6	50	8.52	30	100	Each Channel '0' = Low Loss '1' = Isolation	+5	120	-20 ~ +85	-50 ~ +85
	17.0 ~ 18.0	4.0						-5	50		